

Dediware

Checksum Calculation Methods

DediProg Technology

4F, No. 7, Lane 143, Xinming Rd., Neihu District, Taipei, Taiwan, 114

©DediProg Technology Co., Ltd 2018 All rights reserved.



Important notice:

This document is provided as a guideline and must not be disclosed without the consent of DediProg. However, no responsibility is assumed for errors that might appear.

DediProg reserves the right to make any changes to the product and/or the specification at any time without notice. No part of this document may be copied or reproduced in any form or by any means without prior written consent of DediProg.

This document describes how to calculate the Checksum in Dediware for verification. What are the differences between the Chip Checksum, the File Checksum, and the Option Checksum? Please refer to the followings:

File Checksum :

Calculation method:

After the file has been

File Checksum is for a single file Checksum. First, analyze the file to Binary, and accumulate the effective data. Most of Intel Hex (*.hex, *.h16, *.h20), Motorola Hex(*.mot , *.s19, *.abs, *.mhx, *.srec) and Binary(*.bin, *.rom), TI TXT are all using this method. Use byte sum method for other kinds of files.

The effective data in each partition.

Example 1. There are four partitions of the accumulated data in the below chart.

| PartitionNa... | StartProgAddr: | FileOffset: | ProgramLen: | FillUnusedByte: | FileFormat: | FileChecksum: | ChipCheckSum: | FilePath: |
|----------------|----------------|-------------|-------------|-----------------|---------------|---------------|---------------|-----------|
| Flash | 0x8400 | 0X0 | 0x3B12 | | Motorola S... | ByteAcc | ByteAcc | C:\Users\ |
| Flash | 0xFFBD | 0X0 | 0x1 | | Motorola S... | ByteAcc | ByteAcc | C:\Users\ |
| Flash | 0xFFBF | 0X0 | 0x1 | | Motorola S... | ByteAcc | ByteAcc | C:\Users\ |
| Flash | 0xFFCA | 0X0 | 0x36 | | Motorola S... | ByteAcc | ByteAcc | C:\Users\ |

Then the File checksum calculation method will be

- First Partition Address $0x8400 \sim 0x8400 + 0x3B12 - 0x1$
- + Second Partition Address $0xFFBD$
- + Third Partition Address $0xFFBF$
- + Forth Partition Address $0xFFCA \sim 0xFFCA + 0x36 - 0x1$

Example 2. There is only one partition in this chart.

| PartitionNa... | StartProgAddr: | FileOffset: | ProgramLen: | FillUnusedByte: | FileFormat: | FileChecksum: | ChipCheckSum: | FilePath: |
|----------------|----------------|-------------|-------------|-----------------|---------------|---------------|---------------|-----------|
| Flash | 0X0 | 0X0 | 0X400000 | | Binary(*.bin) | ByteAcc | ByteAcc | C:\Users\ |

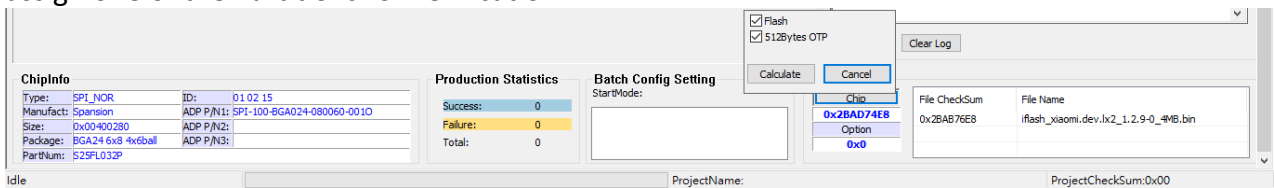
The File Checksum Calculation method will be accumulating the data of the address of $0 \sim 0x3FFFFFF$.

Chip Checksum:

Chip Check sum is the sums of the IC memory contents. Some ICs have two Partitions, then Chip Checksum will be the sums of these two partitions.

Chip Checksum = Byte Sum. The accumulative sums of the content from each Partition.

Example 1: S25FL032P has two Partitions, Flash, and 512 Bytes OTP, then the Checksum will be the sums of Flash + 512 Bytes OTP. In order to let the user verify easily, Dediware can also assign one of the Partitions for verification.



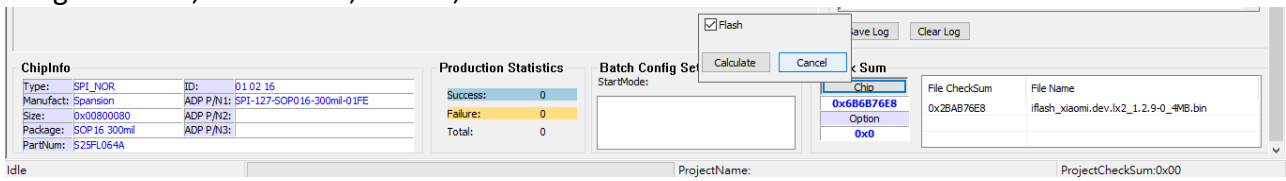
In this case, a Flash same as a 4MB file was loaded. Since 512 Bytes OTP did not load the content, so all of them are 0xFF, then the Chip Checksum calculation will be Flash + 512Bytes OTP.

Flash is 0x2BAB76E8

512Bytes OTP is 0xFF x 0x200 = 1FE00

Chip Checksum = 0x2BAB76E8 + 1FE00 = **2BAD74E8**

Example 2. How to calculate when the file size is smaller than the IC volume? In this case, the assigned Flash, S25FL064A, is 8MB, and the loaded file is 4MB.



This Chip Checksum calculation will be 4MB file (0x2BAB76E8) + 4MB of blank (0xFF).

Chip Checksum = 0x2BAB76E8 + 0x400000 x 0xFF = **6B6B76E8**

Option Checksum :

This Checksum verification is only designed for the IC that has the Option. There is no certain method to calculate; it depends on the address of each IC when it was designed. In production, other than comparing the Chip Checksum and the File Checksum, please also check if the IC that has the Option and if it is correct or not.

DediProg Technology Co., Ltd

Taiwan Headquarter TEL: 886-2-2790-7932 FAX: 886-2-2790-7916
4F., No.7, Ln. 143, Xinming Rd., Neihu Dist., Taipei City 114, Taiwan

China Office TEL: 86-21-5160-0157
Room 518, Building 66, Lane1333, Xinlong Road, Vanke Hongqiao CBD.Min Hang District,
Shanghai, P.R.C. 201101

U. S. Office TEL: 1-909-274-8860
209 E Baseline RD, Suite E208 #8, Tempe, AZ, 85283, USA

Technical Support: support@dediprolog.com Sales Support: sales@dediprolog.com

Information furnished is believed to be accurate and reliable. However, DediProg assumes no responsibility for the consequences of use of such information or for any infringement of patents or other rights of third parties which may result from its use. Specifications mentioned in this publication are subject to change without notice.

This publication supersedes and replaces all information previously supplied.

All rights reserved
Printed in Taiwan.